



**SOUND ANCHORS**  
SPECIALTY AUDIO STANDS

## FLOOR SPEAKER STAND OPTIONS

### H-BASE

This stand is shaped like a capital H. The main members are constructed of either 2" x 4" or 1 1/2" x 3" tube. It is filled and damped. It can be made so that the speaker sits directly on the main members or on mounting bars that may be flush with the top surface of the main tubes or mounted to the top surface of the tubes to raise the speaker an additional thickness of the bar (either 3/8", 1/2" or 3/4"). This stand design is especially good for tall narrow speakers that you want to set up level.



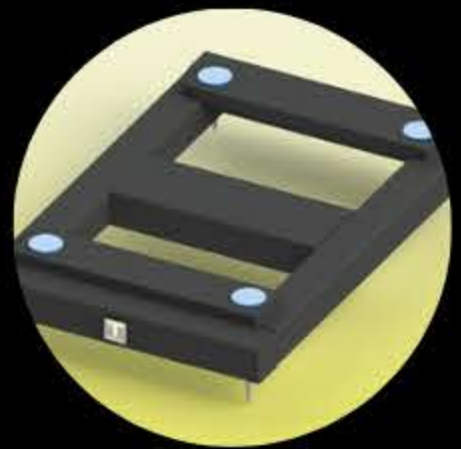
### CRADLE BASE



This stand is shaped like a rectangle. The main members are constructed of 2" x 4", 1 1/2" x 3" or 1" x 2" tube. It is filled and damped. We call this stand a cradle stand because the speaker sits in a cradle composed of 2 bars under the speaker connected to tubes that run down the sides of the speakers. This stand elevates the speaker about 1 3/4" including spikes. This stand design works well with speakers that have a rectangular section.

### PLATFORM BASE

This stand is shaped like a rectangle. The main members are constructed of 2" x 4", 1 1/2" x 3" or 1" x 2" tube. It is filled and damped. It can be made so that the speaker sits directly on the main members or on mounting bars that may be flush with the top surface of the main tubes or mounted to the top surface of the tubes to raise the speaker an additional thickness of the bar (either 3/8", 1/2" or 3/4"). This stand design works well with most speakers.



### T-BASE



The "T" floor base is constructed of 2" x 4" steel tubing, welded, filled, and damped at the factory. These bases will raise the speaker about 3" off the floor (includes about 1" for the spikes). The "T" base floor bases can be sized match a wide variety of speakers.